

# POD LIVING WALL SYSTEM



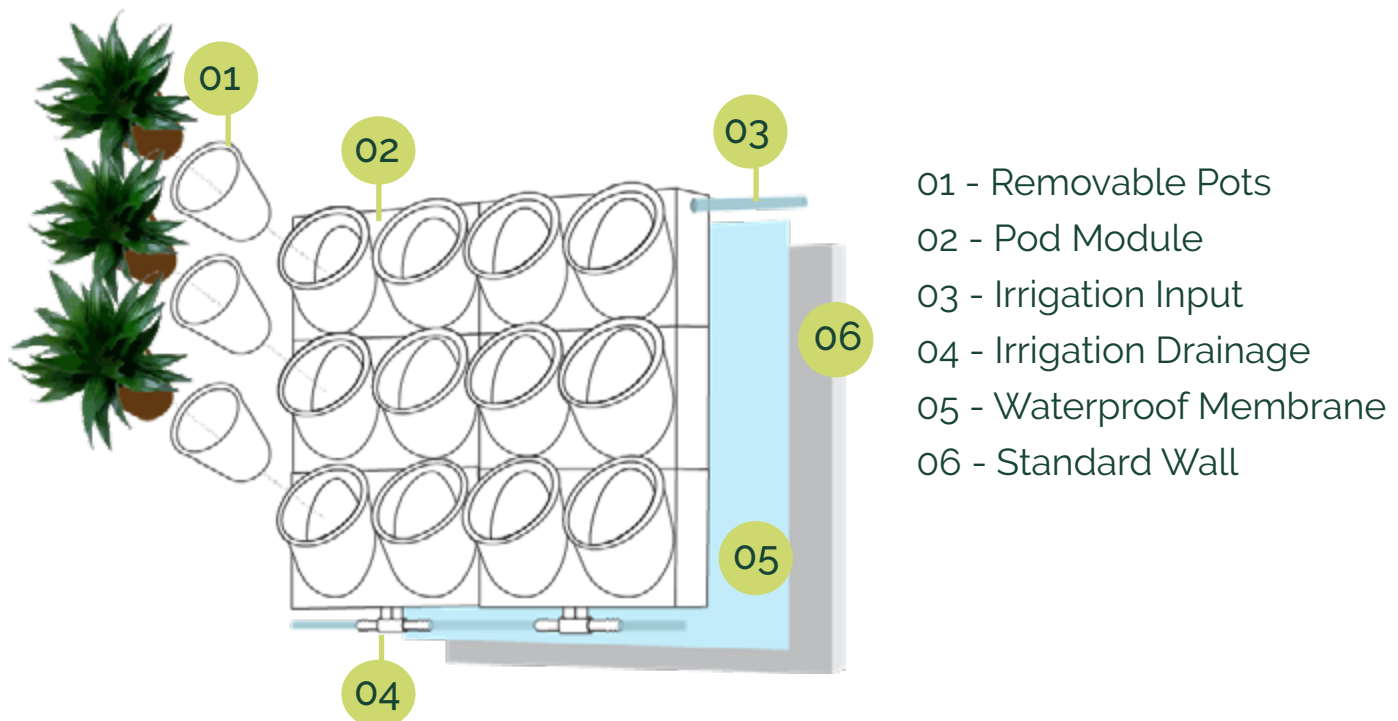


# What Are Living Plant Walls?

A Living Plant Wall is composed of live plants and housing units with either an internal or external irrigation system. The plants are potted, and the housing enables a top-down watering functionality.

## POD Living Wall System

The POD Live Wall System addresses many of the common frustrations with the standard live wall systems. The main benefits of the POD system are plants live longer and the system is fully enclosed to prevent pests, clogging and plant replacements.



Live Walls are priced approximately \$135-\$175 per sq foot

# Contents



The  
**POT**  
pg. 4



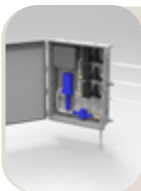
The  
**POD**  
pg. 5



The  
**System**  
pg. 6



The  
**Plants**  
pg. 7



The  
**Plumbing**  
pg. 8



The  
**Features**  
pg. 9



The  
**Gallery**  
pg. 10



Our  
**Process**  
pg. 14

**VALERIE RIPLEY** ★★★★★

This company designs, creates and installs gorgeous moss walls and living plant walls. I received excellent, professional service from a team that went above and beyond my expectations! Highly recommend!

# The POT

## Dimensions

5.5" x 5.4"

## Materials

PP PE HDPE  
with UV Protection

## Usage

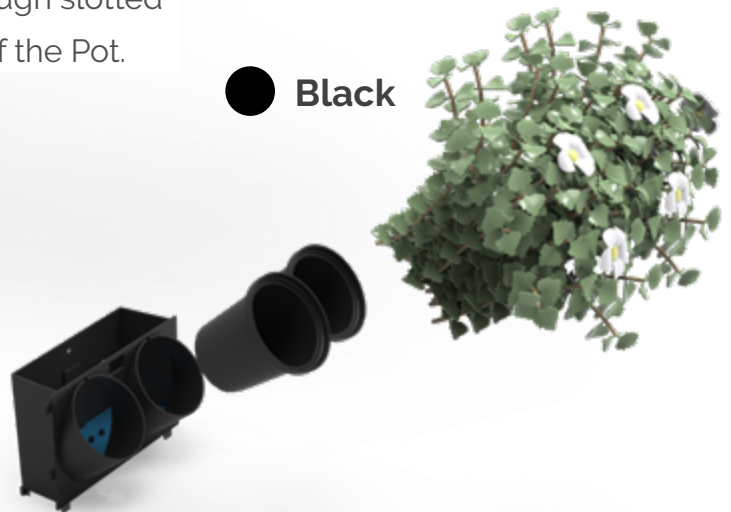
Interior/Exterior



POD Planters utilize a 6" pot vs the 4" common pot. Large pots = more natural soil, which greatly reduces water stress between irrigation cycles. This keeps the plants from stress meaning LESS plant replacements.

Plants intake water through slotted spaces in the bottom of the Pot.

● Black



Plants are held straight and cannot be blown or bumped out of place. Replacements and redesigns are made simple with this system.



# The **POD**



## Dimensions

7.32" x 11.81" x 3.54"

## Materials

PP PE HDPE  
with UV Protection

## Usage

Interior/Exterior

## Weight

4.6 lbs per pod,  
7.54 lb per ft<sup>2</sup>

## Water

One POD uses  
0.1875 Gallon per  
watering

● Black



# The System

## Dimensions

Project Based

## Materials

PP PE HDPE  
with UV Protection

## Usage

Interior/Exterior

## Features

Modular

Icy Weather  
Resistant

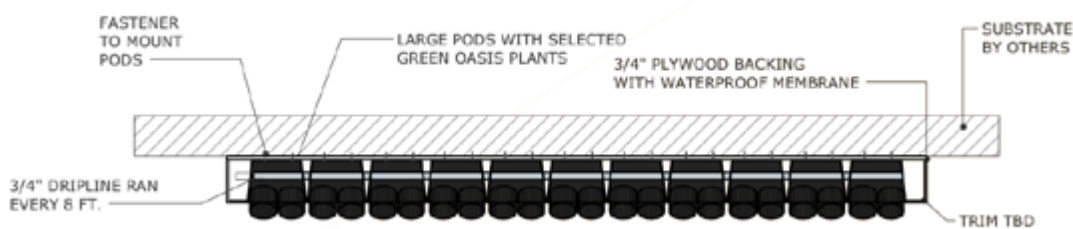
3/4" WATER SUPPLY  
DRIP-LINE

*Ran every 8' vertically*

Water flows down from the top of the system through each pod behind the plants.

It drains out the bottom into a catchall basin or back to the internal plumbing.

The entire irrigation system is **enclosed**, ensuring that leaves and debris that attract pests do not clog the irrigation. Clogging leads to uneven watering and frequent maintenance.



Bottom row is fitted with 3/4" MPT



# The Plants

Plants are selected based on these important factors:

- 1) Availability
- 2) Environment
- 3) Indoors vs Outdoors
- 4) Similar watering requirements



Golden Pothos



Pothos N'Joy



Ficus Elastica



Philodendron  
Congo



Spider Variagated



Nephytis



Croton Petra



Dracaena  
Janet

See our full Plant Selection



## Dimensions

Varies

## Usage

Interior/Exterior

## Interior Lighting

Even flood of 200  
Foot Candles

Supplemental LED  
Lighting

View the Plants



## Dimensions

11.875" x 3.5" x 7.32"

## Materials

PP PE HDPE  
with UV Protection

## Usage

Interior/Exterior

## Requirements

3/4" MPT INLET/OUTLET

ACCESS FOR  
MAINTENANCE

ADEQUATE WATER  
PRESSURE

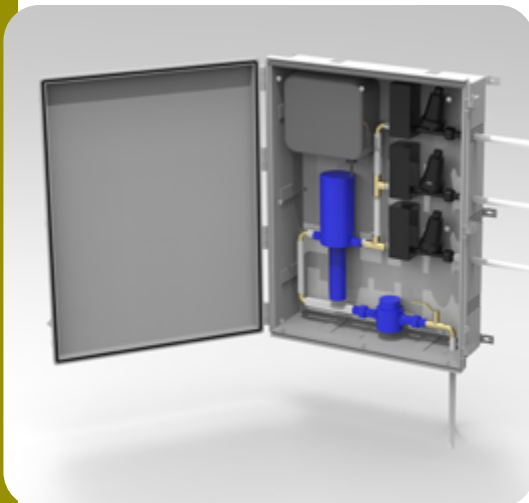
BACK-FLOW PREVENTER  
BY OTHERS

FLOOR DRAIN FOR  
MAINTENANCE

View the Spec Sheet



# The Irrigation



## Automatic Irrigation With Drain-Connected Overflow

This method is our standard recommendation.

Different walls have different configurations, but they all would begin from either the building water supply or rainwater capture tank.

The water runs through a filter, a simple pressure regulator, a fertilizer injector, a flow meter (optional), a control valve, and finally, a drip emitter at the top of the wall. Any runoff would then flow to the building drain.

GREEN OASIS **DOES NOT** HANDLE INTERNAL PLUMBING. THE SYSTEM IS SOLD SEPARATELY AND PLUMBING MUST BE CONDUCTED BY A LICENSED PLUMBER

To Learn About More  
Plumbing Options, view  
this in-depth guide on  
our website.





# The Features



The PODs are modular and can follow curves, stairs, and unusual shapes and still be plumbed to an automatic irrigation system.

## ENCLOSED IRRIGATION

The water flows inside each POD, behind the plants.

Leaves and soil cannot fall into the water, which would create mulch and clog the system.

This is typically where pests would make their nests.





## LEED Points

### Designing with Nature, Biophilic Design for the Indoor Environment

Nature in Space  
Natural Analogues  
Visual Connection with Nature

Incorporate our renderings into your credit submissions.

## WELL Building Credits

**Comfort**  
Sound Reducing Surfaces

**Mind**  
Biophilia I + II  
Beauty + Design II

Due to variables for every project and application of Green Walls, products are not guaranteed to acquire points or credits.

**NRCC**

San Antonio, TX





**NRCC**  
San Antonio, TX







**MGAC**

Los Angeles, CA



**Confidential**





**Riverwalk Plaza Hotel**  
San Antonio, TX



**Base Performance Nutrition**  
San Antonio, TX



# WE TAKE CARE OF THE DETAILS

Utilize Green Oasis's many years of experience to improve your designs with nature. We specialize in commercial spaces and will work closely with you to ensure the success of your project. Based in Texas, our team has completed projects across the USA.



## 1. DESIGN

Successful living walls all start with project requirements. Once we understand project needs, our product designer renders a 3D version of it at-scale. The approved version becomes our production spec sheet.

NOTE: Green Oasis does not provide framing..

## 2. PREFAB & PLANT PREP

At this stage, we begin to prep the growers on the schedule and desired species to ensure the range of plants are available by the installation date. Any special fabrication needs are included in production.





### 3. INSTALLATION

Our team of professionals will arrive and transform your space. All the planning and preparation done before time will make this stage efficient and safe.

If there are contractors already on the project, we can assist with installation instructions for a smooth process.



### 4. MAINTENANCE

A successful Live Wall requires planned maintenance. Each wall has its own unique needs depending on light levels, plant design, etc. Removing any weeds, inspecting the irrigation system, and draining and seasonal pruning are part of the program.



